

# Product Brochure





## COMPANY PROFILE

H.Stars (Guangzhou) Refrigerating Equipment Group Ltd., established in Economic & Technological Development Zone of Guangzhou, China in 1992, composed of 8 subsidiaries to provide one-stop solution to HVAC customers, specializing in R&D, production, design and installation. As the company grows, H.Stars group expands its business globally and has sold to 53 different countries. H.Stars Group is awarded with "New and High Technology Enterprise in Guangzhou" and has become the training base of many universities both in China and abroad via technology cooperation.

H.Stars group supplies an extensive line of Commercial and Industrial Energy Saving HVAC products including: Air Cooled Chiller, Water Cooled Chiller, Industrial Chiller, Centrifugal Chiller, Magnetic oil free centrifugal chiller, Multi-function Chiller, Hot Water Unit, Heat Recovery Unit, Heat Pump Unit, Dual Source Heat Pump, Condensing Unit, Glycol Chiller, Shell and Tube Heat Exchanger, Air Handling Unit, Fan Coil Unit, Cooling Tower, etc. all type of HVAC products.

H.Stars Group has been dedicated in quality and innovation and is technically strong in commercial and industrial application as a HVAC manufacturer. Apart from obtaining plenty of energy-saving product patents, H.Stars Group has achieved CE certifications for Pressure Vessel and standard chillers, BR1, ASME, ISO9001:2000, ISO14001:2004 and other certifications.

A good reputation of H.Stars Group has been built and delivers a full HVAC service to customers worldwide. Our products are widely applied in industries for cooling of Laser generators, Welding electrodes, Cutting machines, Electric spark machines, Extrusion process, Hydraulic System, Electroplating, Ultrasonic Cleaning, Ion Plating film, Electronic facility, Electrical appliance components, Compressed Gas Dehumidification, Dairy and Beverage Cooling processing, Pharmaceutical and Biological products, Medical equipment, Glass Coating, Tempered Glass and Cultivation Sea Food.

H.Stars Group will continue to develop energy saving and environmental friendly equipment to create "The Efficiency Planet" as our obligation. By focusing on customers' needs and wants in order to contribute more our potentials, from now on, H.Stars Group will hand in hand with you to be a shining star in the foreseeable future.



ISO 9001 Certificate



ISO 14001 Certificate



CE Certificate



Energy Conservation Certification



Guangzhou Famous Trademark Certificate



Hi-tech Enterprise Authenticated Certificate



Enterprise Credit Evaluation



National Industrial Production Permit



Market's Favourite Brand



# Commercial and Industrial HVAC Equipment

## Standard High-efficiency Equipment



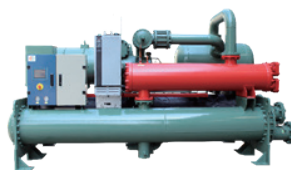
### ◆ Air Cooled Screw Chiller

Cooling Capacity Range: 80~4000Kw  
Chilled water Temp: 5°C~20°C  
Refrigerant: R407c, R134a, R1234ze, R404a



### ◆ Air Cooled Scroll Chiller

Cooling Capacity Range: 10Kw-1000Kw  
Chilled water Temp: 5°C~20°C  
Refrigerant: R410a, R134a, R1234ze, R1234yf



### ◆ Water Cooled Screw Chiller

Cooling Capacity Range: 80Kw-4000Kw  
Chilled water Temp: 5°C~20°C  
Refrigerant: R407c, R134a, R1234ze, R404a



### ◆ Water Cooled Scroll Chiller

Cooling Capacity Range: 10Kw-1000Kw  
Chilled water Temp: 5°C~20°C  
Refrigerant: R410a, R134a, R1234ze, R1234yf



### ◆ Screw Air Source Heat Pump

Heating Range: 80~4000Kw  
Hot water Temp range: 45°C~95°C  
Refrigerant: R134a, R407c, R1234ze



### ◆ Scroll Air Source Heat Pump

Heating Range: 10Kw-1000Kw  
Hot water Temp range: 45°C~70°C  
Refrigerant: R410a, R134a, R1234ze



### ◆ Screw Water Source Heat Pump

Heating Range: 100Kw-3000Kw  
Hot water Temp. range: 45°C~95°C  
Refrigerant: R407c, R134a, R1234ze



### ◆ Scroll Water Source Heat Pump

Heating Range: 20Kw-1000Kw  
Hot water Temp. range: 40°C~70°C  
Refrigerant: R410a, R134a, R1234ze



### ◆ Air-cooled Magnetic Oil-free Chiller

Rated Cooling Capacity: 80TON~500TON  
Chilled water outlet temperature range: 5~20°C



### ◆ Water-cooled Magnetic Oil-free Chiller

Cooling Capacity Range: 100TON~1000TON  
Chilled water outlet temperature range: 5~20°C



### ◆ Centrifugal Water-cooled Chiller

Cooling Capacity Range: 450TON~2000TON  
Chilled water outlet temperature range: 5~20°C



### ◆ Falling Film Water Cooled Chiller

Cooling Capacity Range: 443KW~2111KW  
Chilled water outlet temperature range: 5~20°C

## Industrial Chiller



### ◆ Ice Storage Chiller

Cooling Capacity Range: 15KW~4000KW  
Chilled water outlet temperature range: -8°C~12°C



### ◆ Heat Recovery Industrial Chiller

Cooling Capacity Range: 120KW~4003KW  
Chilled water outlet temperature range: 5~20°C



### ◆ Integrated Package Chiller

Cooling Capacity Range: 100~6000Kw  
Inlet and Outlet Temperature: 1°C~20°C



### ◆ Industrial Water Cooled Scroll Chiller(Box Type)

Cooling Capacity Range: 10.2KW~156KW  
Chilled water outlet temperature range: 5~20°C



### ◆ Water-cooled Scroll Inverter Chiller

Cooling Capacity Range: 92KW~1526KW  
Chilled water outlet temperature range: 5~20°C



### ◆ Air Cooled Integrated Chiller

Cooling Capacity Range: 15KW~150KW  
Chilled water outlet temperature range: 5~20°C



### ◆ Air-Cooled Scroll Industrial Chiller

Cooling Capacity Range: 120KW~4003KW  
Chilled water outlet temperature range: 5~20°C



### ◆ Air cooled Screw industrial chiller

Cooling Capacity Range: 148KW~920KW  
Chilled water outlet temperature range: 5~20°C

# Industrial Refrigeration Cooling Equipment

## Low Temperature Chiller / Glycol Chiller



- ◆ **Water-cooled Screw Low Temperature Chiller**  
Cooling Capacity Range: 17KW~2369KW  
Chilled water outlet temperature range: 10~-35°C



- ◆ **Two-stage Compression Condensing Unit**  
Cooling Capacity Range: 76KW~363KW  
Min. Evaporation Temperature: -45°C



- ◆ **Condensing Unit**  
Cooling Capacity Range: 17KW~2218KW  
Min. Evaporation Temperature: -10°C~-40°C



- ◆ **Single-stage Compression Condensing Unit**  
Cooling Capacity Range: 30KW~5117KW  
Min. Evaporation Temperature: -40°C



- ◆ **Flooded Type Low Temperature Chiller**  
Cooling Capacity Range: 229KW~1625KW  
Chilled water outlet temperature range: 10~-15°C



- ◆ **Screw Condensing Unit**  
Cooling Capacity Range: 292KW~5117KW  
Min. Evaporation Temperature: -40°C

## Cold Chain Equipment



- ◆ **Parallel Condensing Unit**  
Cooling Capacity Range: 26KW~1150KW  
Min. Evaporation Temperature: -45°C



- ◆ **Condensing Unit**  
Cooling Capacity Range: 17KW~2218KW  
Min. Evaporation Temperature: -40°C



- ◆ **Compressor Set Unit**  
Cooling Capacity Range: 56KW~847KW  
Min. Evaporation Temperature: -45°C



- ◆ **Cold Room Evaporator**  
Heat Exchange Capacity Range: 0.35KW~101KW



- ◆ **Semi-closed Piston Compression Condensing Unit**  
Cooling Capacity Range: 14KW~76KW  
Min. Evaporation Temperature: -20°C



- ◆ **Parallel Piston Compression Condensing Unit**  
Cooling Capacity Range: 56KW~847KW  
Min. Evaporation Temperature: -45°C



- ◆ **Evaporative Condenser**  
Cooling Capacity Range: 224KW~1770KW



- ◆ **Air-cooled Condenser**  
Heat Exchange Capacity Range: 9.34KW~1611KW



# Heat Pump

## Standard Products



◆ Water Source high temperature Heat Pump  
Heating Capacity Range: 100KW~2111KW  
Hot Water Max. Outlet Temperature: 90~120°C



◆ Cold Recovery / Intelligent Hot Water Unit  
Heating Capacity Range: 25.3KW~908.8KW  
Hot Water Max. Outlet Temperature: 55°C



◆ Air Source High Temperature Intelligent Heat Pump  
Heating Capacity Range: 25KW~1000KW  
Hot Water Max. Outlet Temperature: 90~120°C

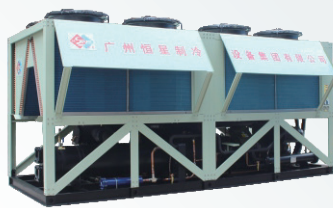


◆ Water Source Heat Pump Unit  
Cooling capacity of air conditioning mode: 15.2KW~336KW  
Hot water mode heating capacity: 16.6KW~336.7KW  
Heating mode cooling capacity: 17.3KW~360.6KW  
Chilled water outlet temperature range: 5~20°C  
Hot water outlet temperature: 55°C

## Energy-saving Heat Pump



◆ 90 °C High Temp. Heat Pump  
Heating Capacity Range: 80KW~2111KW  
Hot Water Outlet Temperature Range: 65~90°C



◆ 120 °C High Temp. Heat Pump  
Heating Capacity Range: 300KW~1000KW  
Hot Water Outlet Temperature Range: 90~125°C



◆ R1234ze Heat Pump  
Cooling Capacity Range: 10KW~2000KW  
Chilled water outlet temperature range: 6~20°C  
Heating Capacity Range: 15KW~2110KW  
Hot Water Outlet Temperature Range: 45~85°C  
Ambient Temperature Range: -35~53°C  
Chilled Water Temp.: 5~35°C

## Other products



◆ Rooftop Package Unit



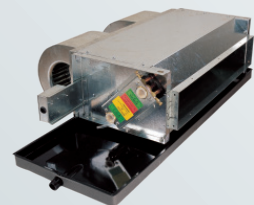
◆ Modular Air Handling Unit



◆ Commercial Air handling Unit



◆ Cooling Tower



◆ Fan Coil Unit



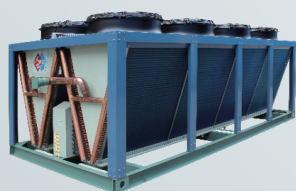
◆ Dry Coolers



◆ Water pump



◆ Shell and tube heat exchangers



◆ Remote condenser



◆ Plate heat exchanger



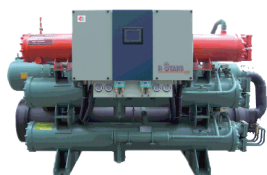
◆ Ice storage tank  
(for air condition use)



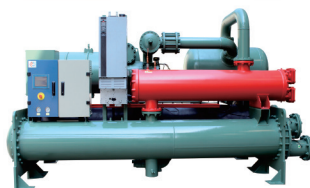
◆ VRF unit

# Special equipment

## Heat Recovery Chillers|Heat Pump



◆ (Heat Recovery) Water-cooled Screw Chiller  
Cooling Capacity Range: 92KW~1526KW  
Chilled water outlet temperature range: 5~20°C



◆ (Heat Recovery) VFD Screw Chiller  
Cooling Capacity Range: 443KW~2111KW  
Chilled water outlet temperature range: 5~20°C



◆ (Heat Recovery) High Voltage Chiller  
Cooling Capacity Range: 1000KW~4000KW  
Chilled water outlet temperature range: 5~20°C



◆ (Heat Recovery) Water Source Heat Pump  
Cooling Capacity Range: 98KW~3272KW  
Chilled water outlet temperature range: 5~20°C



◆ (Heat Recovery) Scroll Sewage Source Heat Pump  
Cooling Capacity Range: 10.2KW~156KW  
Chilled water outlet temperature range: 5~20°C



◆ (Heat Recovery) Dual-Source Heat Pump  
Cooling Capacity Range: 109KW~675KW  
Chilled water outlet temperature range: 5~20°C



◆ ASME Chiller  
Cooling Capacity Range: 120KW~4003KW  
Chilled water outlet temperature range: 5~20°C



◆ Indoor Unit of an Evaporative Chiller  
Cooling Capacity Range: 433KW~2111KW  
Chilled water outlet temperature range: 5~20°C



◆ (Heat Recovery) Integrated Unit for Mine Air Conditioning  
Cooling Capacity Range: 100KW~600KW  
Chilled water outlet temperature range: 5~20°C

## Anti-corrosion and Explosion-proof Industrial Products



◆ Anti-corrosion Heat Recovery Chiller  
Cooling Capacity Range: 120KW~4003KW  
Chilled water outlet temperature range: 5~20°C



◆ Anti-corrosion Air-cooled Chiller  
Cooling Capacity Range: 109KW~675KW  
Chilled water outlet temperature range: 5~20°C



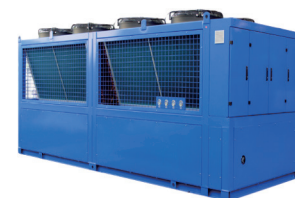
◆ Explosion-proof Chiller  
Cooling Capacity Range: 120KW~4003KW  
Chilled water outlet temperature range: 5~20°C



◆ High-precision Constant Temperature  
Cooling Capacity Range: 20KW~500KW  
Temperature Accuracy:  $\pm 0.1^{\circ}\text{C}$



◆ High-precision Air-cooled Chiller  
Cooling Capacity Range: 109KW~675KW  
Chilled water outlet temperature range: 5~20°C



◆ Non-standard Voltage Air-cooled Chiller  
Cooling Capacity Range: 109KW~675KW  
Chilled water outlet temperature range: 5~20°C



◆ Water-cooled Chilled with Heat Recovery  
Cooling Capacity Range: 120KW~4003KW  
Chilled water outlet temperature range: 5~20°C



◆ VFD Air-cooled Chiller  
Cooling Capacity Range: 109KW~675KW  
Chilled water outlet temperature range: 5~20°C



◆ Dual Source Heat Pump  
Cooling Capacity Range: 115KW~460KW  
Chilled water outlet temperature range: 55~85°C



## Projects Reference





## **H.Stars (Guangzhou) Refrigerating Equipment Group Ltd.**

**Add:** No.1 Guoyuan 4th Road, the Northern Part of the Eastern Section of Guangzhou Economic & Technological Development District, Guangzhou . China

**Tel:** 86-20-62266755 ext.886

**Fax:** 86-20-82266081

**Email:** [sales@hstars.com.cn](mailto:sales@hstars.com.cn)

**Web:** [www.hstarschiller.com](http://www.hstarschiller.com)/[www.heatexchangermaker.com](http://www.heatexchangermaker.com)

**Facebook:** [www.facebook.com/Hstarsgroup](https://www.facebook.com/Hstarsgroup)

**LinkedIn:** [www.linkedin.com/company/hstarsgroup](https://www.linkedin.com/company/hstarsgroup)

**Twitter:** [twitter.com/HStarsGroup](https://twitter.com/HStarsGroup)

**Instagram:** [www.instagram.com/hstars\\_chiller\\_maker](https://www.instagram.com/hstars_chiller_maker)

